

JACK HILLS IRON ORE MINE WESTERN AUSTRALIA'S MID-WEST REGION

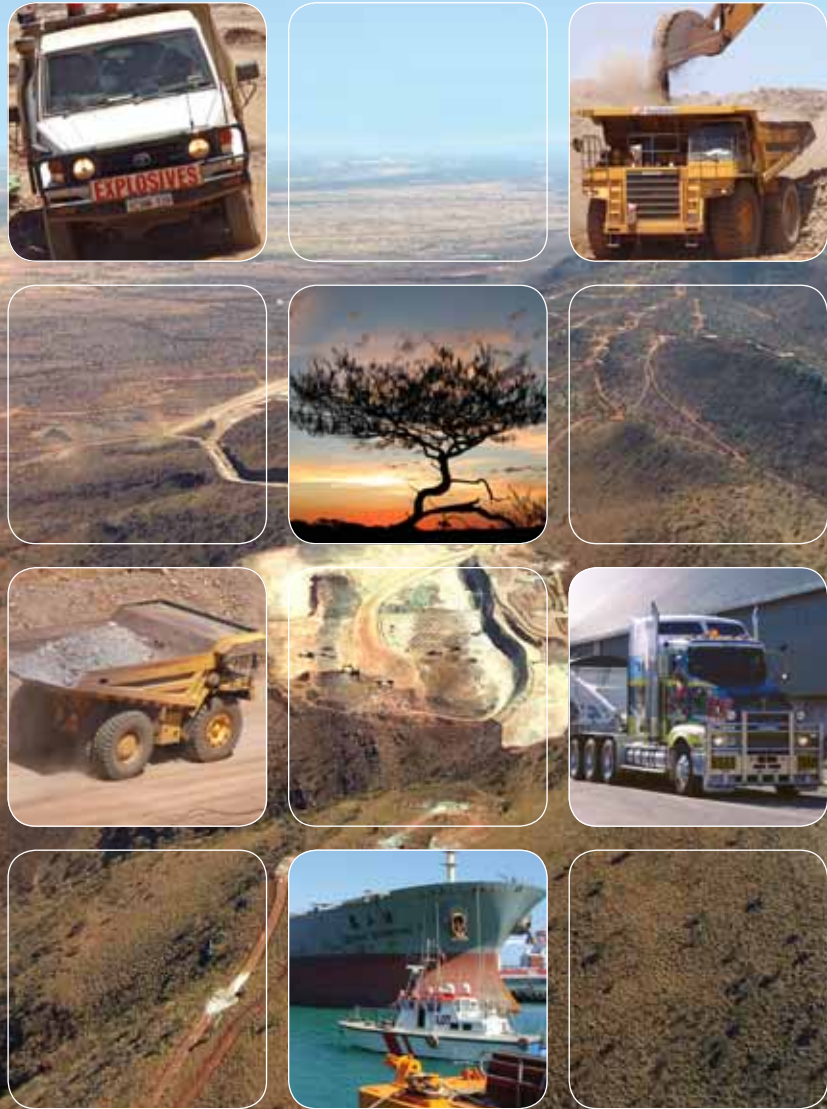


THE HEART OF MID-WEST IRON ORE

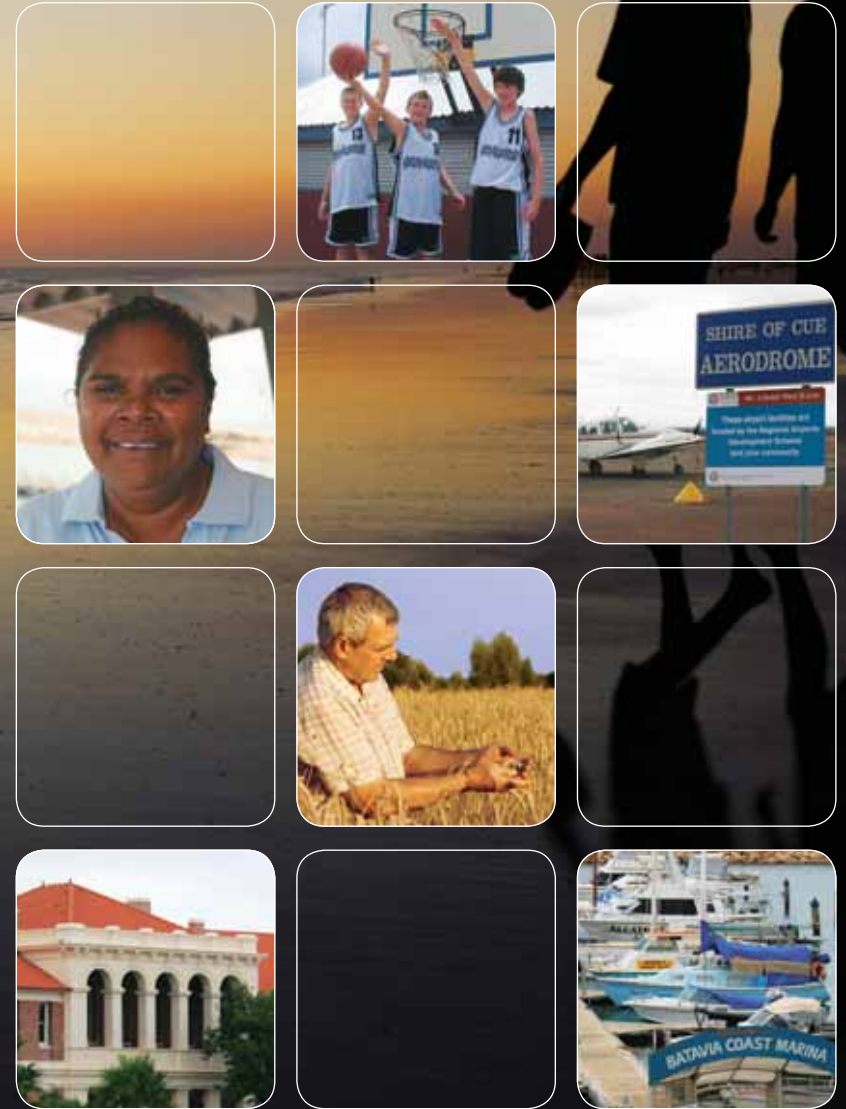



CROSSLANDS
RESOURCES LTD

WHAT WE DO HERE



BENEFITS EVERYONE



JACK HILLS IRON ORE MINE

EXPORTING HIGH GRADE ORE FROM THE MID-WEST

Crosslands owns and operates the Jack Hills iron ore mine in Western Australia's mid-west region, 380km north-east of Geraldton. Jack Hills boasts a significant high grade iron ore resource suitable for low cost open pit mining.

Mining commenced in November 2006, with the first shipment of ore in February 2007. Ore is mined, crushed and screened at the mine, and then transported 640km by road via Cue to the port of Geraldton where it is loaded and shipped to customers in China and Korea.

To minimise the impact of road haulage on local communities, Crosslands has invested in state-of-the-art triple road trains, designed for safety, stability, noise mitigation and dust control. They are used to transport the ore from the mine to Cue and through to the port at Geraldton.

Initial operations were established at 1.5 million tonnes (mtpa) of high grade premium lump ore and fines a year.

The mid-west is poised to become Australia's second iron ore province, after the Pilbara region in Western Australia.

OVERVIEW

- 1.5 mtpa high grade lump and fines
- Crushed and screened at mine site
- Road transport to Geraldton port
- Up to five years duration to 2011
- 200+ people directly employed
- Road haulage route:
Mine Access Road; Beringarra-Cue Road to Cue; Great Northern Highway to Mt Magnet; Mt Magnet-Geraldton Road to the port of Geraldton
- Modern road trains:
Special bottom dump trailers designed for safe road handling and stability
 - Prime movers fitted with exhaust blankets to reduce noise
 - Exhaust brakes not used in built-up areas
 - Dust covers on trailers



OUR PLANS FOR THE FUTURE

EXPANDING JACK HILLS FOR THE BENEFIT OF THE WHOLE COMMUNITY

Jack Hills is a high grade iron ore resource. To take advantage of this, plans are under way to significantly increase production at Jack Hills which will provide a major boost to the economy of the mid-west.

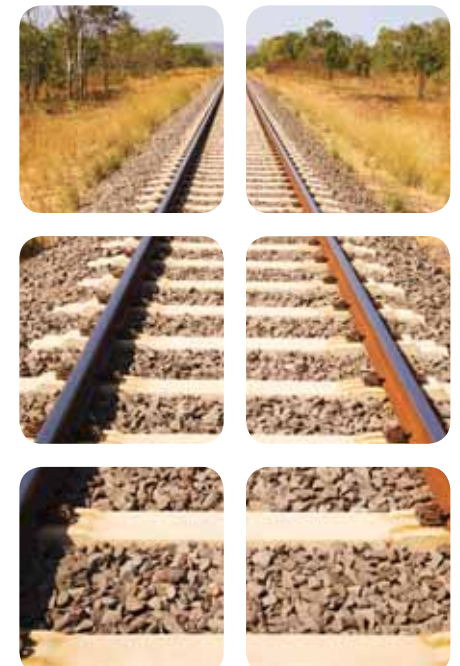
To accommodate this increase, new rail infrastructure will need to be built to transport ore from the Jack Hills mine site (and others in the region) to a new deepwater port to be constructed at Oakajee, north of Geraldton.

The port and rail development will take more than four years to complete, and includes engineering studies, government approvals, land access, native title, financing, design and construction.

First exports from the new infrastructure are anticipated in 2012.

OVERVIEW


- Target significant increase in production
- Rail transport
- Trains over 2.4 km in length
- Shipping in 180 000 tonne Cape size vessels
- Around 500 people directly employed
- Requires development of 500+ km standard gauge rail and deep water port at Oakajee



Carnarvon ■

Denham ■




 JACK HILLS

Cue ■

Mt Magnet ■

OAKAJEE 

Geraldton 

M I D W E S T R E G I O N

Current road haulage route

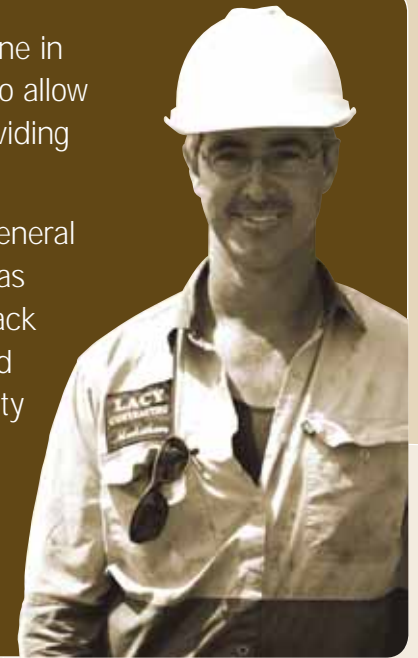
Proposed rail route (Stage 2)



“ I have been here from day one in September 2006, building tracks to allow access for the drilling rigs and providing pads for the camps.”

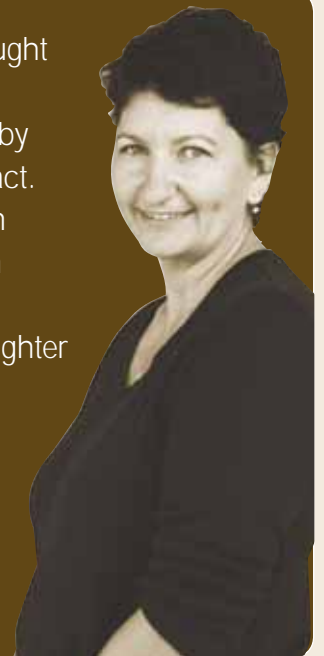
“It is very good for me. I provide general contracting services. Crosslands has employed me locally. I don't get back to Meekatharra as often as I should but it's great to have the opportunity to work with Crosslands on this development.”

Peter Lacy
Lacy Contracting
Meekatharra



“ Cue is a lovely bubbly town. We bought a house here because we like the town, the people and also the fact that the nearby mining operation is having a positive impact. Crosslands' mine and the accommodation depot for the haulage drivers here in town means there are more jobs available; it is bringing employment to the town. My daughter hasn't had to leave to find a job. She is working in a local mining camp.”

Michelle Fowler
Prospector
Cue



ABOUT CROSSLANDS

Crosslands Resources Ltd is the owner of the Jack Hills iron ore project located in the mid-west region of Western Australia. Crosslands is jointly owned (50/50) by Murchison Metals Ltd and Mitsubishi Development Pty Ltd a subsidiary of Mitsubishi Corporation, Japan's largest general trading company.

Crosslands has a strong, experienced and energetic hands-on management team dedicated to transforming Crosslands into a significant supplier of iron ore to take advantage of current strong demand for high quality Australian iron ore from major Asian markets.

Prior to Mitsubishi acquiring its interest, Crosslands was a wholly owned subsidiary of Murchison Metals.

Join us

We're looking for people like you to join our team. Visit www.crosslands.com.au for current employment opportunities or register your interest by emailing careers@crosslands.com.au or calling (08) 9483 0514.

Stay in touch at www.crosslands.com.au

t (08) 9483 0500

f (08) 9481 7966

Level 2, 18 Richardson Street
West Perth
Western Australia 6005

PO Box 1454
West Perth WA 6872



 Mitsubishi Development Pty Ltd

A 50/50 joint venture between Murchison Metals Ltd and Mitsubishi Development Pty Ltd

Crosslands Resources Ltd ABN 66 061 262 397

